



neatplaces.co.nz
A curated guide of the best spots to eat, drink, shop and explore Kaikōura like a local.

Nins Bin



State Highway 1 (North)
Third generation family run business, Nins Bin is an iconic Kaikōura destination, where crayfish is caught daily using sustainable methods and served fresh out of the caravan right beside the sea.



Husk Home
27 West End
A beautifully curated homewares store, Husk is a collection of objects owner-operators, mother-daughter duo Linda and Lysandra would love to have in their own home.
At Husk you'll see handmade products from small local makers sitting side by side with established NZ and Australian brands.

Middle Hill MTB



530 Waipapa Road
Situated in one of the most picturesque spots in the region, Middle Hill MTB has a significant range of downhill tracks for the intermediate to experienced rider. Booking ahead is essential.

Hapuku Lodge & Tree Houses



State Highway 1 (North)
Hapuku Lodge is your destination for luxury accommodation, most famous for its Tree House rooms. The restaurant is open to all and offers a farm-to-table experience. One of the finest dining options in the region.

Peninsula Walkway



Point Kean, South Bay Carpark
Peninsula Walkway has it all; ocean vibes, clifftop and mountain views, and, of course, an abundance of marine wildlife. You can start from either Kaikōura town centre, Point Kean or South Bay car park.

Beach House Café



39 Beach Road
A true locals' favourite, Beach House is known for its relaxed atmosphere and friendly service. An easy stop on the route North, just keep your eyes peeled for a black and white cottage turned café.

The Pier Hotel



1 Avoca Street
The Pier Hotel sits right on the waterfront at the edge of the Kaikōura Peninsula, and has the best views in town. A classic kiwi pub with seafood galore on the menu.



Hapuku Kitchen



17 Parsons Road
All about reconnecting people with the land and the sea, and with where their food comes from, Hapuku Kitchen provides specialised cooking classes for small groups in a setting where farm meets plate.

Coopers Catch



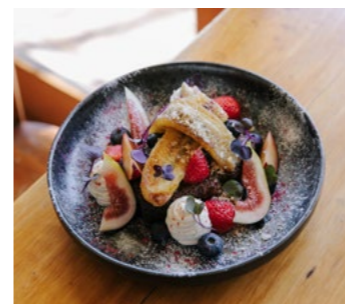
9 West End
Kaikōura's premium fish n' chip restaurant serves fresh fish cooked to order. There's ample indoor and outdoor seating, or tuck your order under the arm and walk across the footbridge to the beach.

Boo-Teek Café



146 Esplanade
A French inspired eatery with a selection of delicate sweet treats and a breakfast and brunch menu, plus afternoon grazing platters brimming with French pâtés, parfaits, terrines and local cheeses.

Sime's Kitchen



33 Beach Road
Sime's Kitchen has an impressive menu featuring café fare with a twist, coffee brewed to perfection with Peoples Coffee beans, helpful staff and plenty of indoor and outdoor seating options.

Zephyr Restaurant



40 West End
A modern restaurant in the heart of town, Zephyr offers quality French inspired food with a focus on meats such as duck and venison. A stylish yet relaxed atmosphere with great service.

Kaikōura Seafood BBQ



55 Fyffe Quay
A humble seafood kiosk operating near the Kaikōura Peninsula seal colony. One of the most affordable spots in town for that world famous crayfish, dining here is a truly authentic Kaikōura experience.

The Mayfair Arts and Culture Kaikōura



80 Esplanade
The Mayfair Arts and Culture hub sits on the waterfront and functions primarily as a movie theatre with two state of the art auditoriums. It also hosts live performances, lectures and art exhibitions.

BeeBox



28 West End
Located in the heart of the town centre's post-earthquake container mall, BeeBox is both a retail store specialising in local honey and a coffee shop serving organic Allpress espresso.

Stay and explore.

Kaikōura township & coastline.

We celebrate the neat restaurants, cafés, shops and galleries in and around town. Whether you're a local or just visiting, you'll find something on Neat Places that tickles your fancy.

- Eat & Drink
- Coffee
- Licensed
- Nightlife
- Stay
- Shopping
- Fashion
- Services
- See & Do
- Culture
- Activity
- Wellbeing



Slam Club
10 West End
A popular foodie destination, Slam Club is famous for its humble/ not-so-humble toasted sandwiches filled with game and homemade chutneys, uber-friendly atmosphere and funky interiors. A perfect spot for coffee and lunch during the day.
Come the weekend, there's an evening menu featuring smoked meats straight from the BBQ smoker outback, some vegetarian options and enticing cabinet sweet treats. Always a relaxed local vibe with a great selection of craft beers and local wines too.

The Strawberry Tree



21 West End
A true Kaikōura institution, The Strawberry Tree is a quirky Irish bar and live music venue that also dishes up some of the best grub in town. There's a beer garden, crackling fire for cold evenings and a warm atmosphere throughout the day.

Emporium Brewing

18



57a Beach Road

This award-winning brewery and bar is open daily with 12 taps of goodness, a lunch menu to match, 18 hole minigolf course and two escape rooms. You can also fill riggers to take away if you're not planning to stay.

Mt Fyffe Distillery

19



mtfyffedistillery.co.nz

On the foothills of Mt Fyffe, you'll find one of NZ's smallest nano distilleries. To experience Kaikōura in a bottle and hear about their award winning story inspired gins, visit their website.

The Store, Kekerengu

22



5748 State Highway 1, Kekerengu

An impressive coastal property that is both a café and events venue with endless seating options and incomparable sea views. An onsite camping ground also provides a true undisturbed wild coastal experience.

Kaikōura Fine Foods

20



8 West End

Run by a local couple, Rob and Rosie, Kaikōura Fine Foods is a small delicatessen at the north end of the main street showcasing local artisan produce alongside international fine foods.

Kaikōura Museum

23

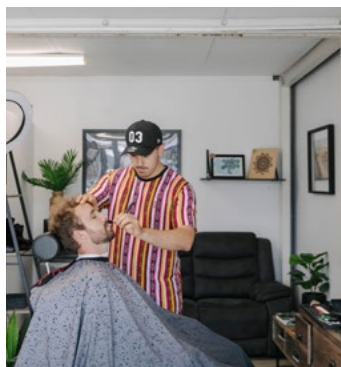


96 West End

Everything in the Kaikōura Museum revolves around the interconnectedness of land and sea, much like life in the seaside town. A perfect place to discover a deeper sense of what the region is about.

By the Blade

21



28 West End

The first barber shop to open in town in fifty years, By the Blade is all about male grooming and image. Expect to get everything from hair art to a beard trim done right here.

Llama Trekking Kaikōura

24



12 Kōwhai Ford Road

A unique exotic animal experience, trek with your own llama at your side. Enjoy either a one-hour riverbank taster, or a half-day Kaikōura bay, beach, seal colony, and picnic trek with fabulous mountain views.

Kaikōura Surf Company

25



4 Beach Road

This iconic store has all your surf and skate needs covered. Kaikōura Surf Company prides itself on providing customers with knowledge and advice, along with supplying some of the coolest apparel in town.

Harmon's Motor Museum

28



105 Beach Road
Entrance through Bernie's Diner

A classic car museum exhibiting the private collection of father-son duo Geoff and Bernard Harmon. Expect to view over thirty American cars from the 50s-70s along a streetscape of Kaikōura from a similar time.

Addy & Lou

26



44 West End

Filled with beautiful homewares, gifts and items for the little ones, you're bound to find something beautiful in-store at Addy & Lou. They have a great range of both NZ made and international products.

Flo & Co.

29



13 West End

Flo & Co is a family owned and operated café featuring Switch Espresso and quality, in-house-made food. There's a kids' corner, pretty-as-a-picture contemporary interiors and plenty of outdoor seating.

Karaka Lobster

27



Okiwi Bay 2825, State Highway 1

Impossible to miss, a giant crayfish sits on the roof of this roadside restaurant. Choose a cray to enjoy here or have it wrapped up to go. Coffee and cabinet goods available as well.

The Kaikōura Trail



Kaikōura District

A 48km circuit in its entirety, the Kaikōura Trail is a cycle tour with the most magnificent backdrops. Choose from the many entry places or take time to cycle the full loop.

Cultural Artwork Package



Kaikōura District

Over twenty sites of stunning cultural artworks showcase the rich local history of the region along a stretch of 60km from Oaro to Clarence. Stop to take in the stunning views, admire the artworks and connect more deeply with this special region.

neatplaces

Your guide to getting around Kaikōura



See more at:
neatplaces.co.nz

or on social:
[@neatplaces](https://www.instagram.com/neatplaces)

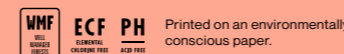


Listings:

- 01 Nins Bin
- 02 Husk Home
- 03 Middle Hill MTB
- 04 Hapuku Lodge & Tree Houses
- 05 Kaikōura Peninsula Walkway
- 06 The Pier Hotel
- 07 Beach House Café
- 08 Hapuku Kitchen
- 09 Coopers Catch
- 10 Boo-Teek Café
- 11 Sime's Kitchen
- 12 Zephyr Restaurant
- 13 Kaikōura Seafood BBQ
- 14 The Mayfair Arts and Culture Kaikōura
- 15 Bee Box
- 16 Slam Club
- 17 The Strawberry Tree
- 18 Emporium Brewing
- 19 Mt Fyffe Distillery
- 20 Kaikōura Fine Foods
- 21 By the Blade
- 22 The Store, Kekerengu
- 23 Kaikōura Museum
- 24 Llama Trekking Kaikōura
- 25 Kaikōura Surf Company
- 26 Addy & Lou
- 27 Karaka Lobster
- 28 Harmon's Motor Museum
- 29 Flo & Co.

- Cultural Artwork Package
- Kaikōura Peninsula Walkway

DISCLAIMER: This guide is curated by Neat Places. The map is an approximate guide only. All due care has been taken to ensure the content is accurate. Enjoy!



© Neat Places 2022

