



KIA ORA FROM KAIKOURA

W H A L E W A T C H I N G C A P I T A L O F N E W Z E A L A N D



AUCKLAND

PICTON

KAIKOURA

CHRISTCHURCH

QUEENSTOWN

2.5 hour drive north from
Christchurch

YEAR ROUND RESIDENTS

MIGHTY SPERM WHALE

CHAMPION BREATH HOLDERS- AVERAGE 1-2 SIGHTINGS PER TOUR



HUMPBACK WHALES

MIGRATE ALONG THE KAIKOURA COAST THROUGHOUT
THE MONTHS OF MAY-SEPTEMBER AS THEY HEAD TO
THE WARMER WATERS FOR COOLER SEASON



BLUE WHALE

LARGEST CREATURE IN THE WORLD. CAN
GROW UP TO 30+ METERS IN LENGTH



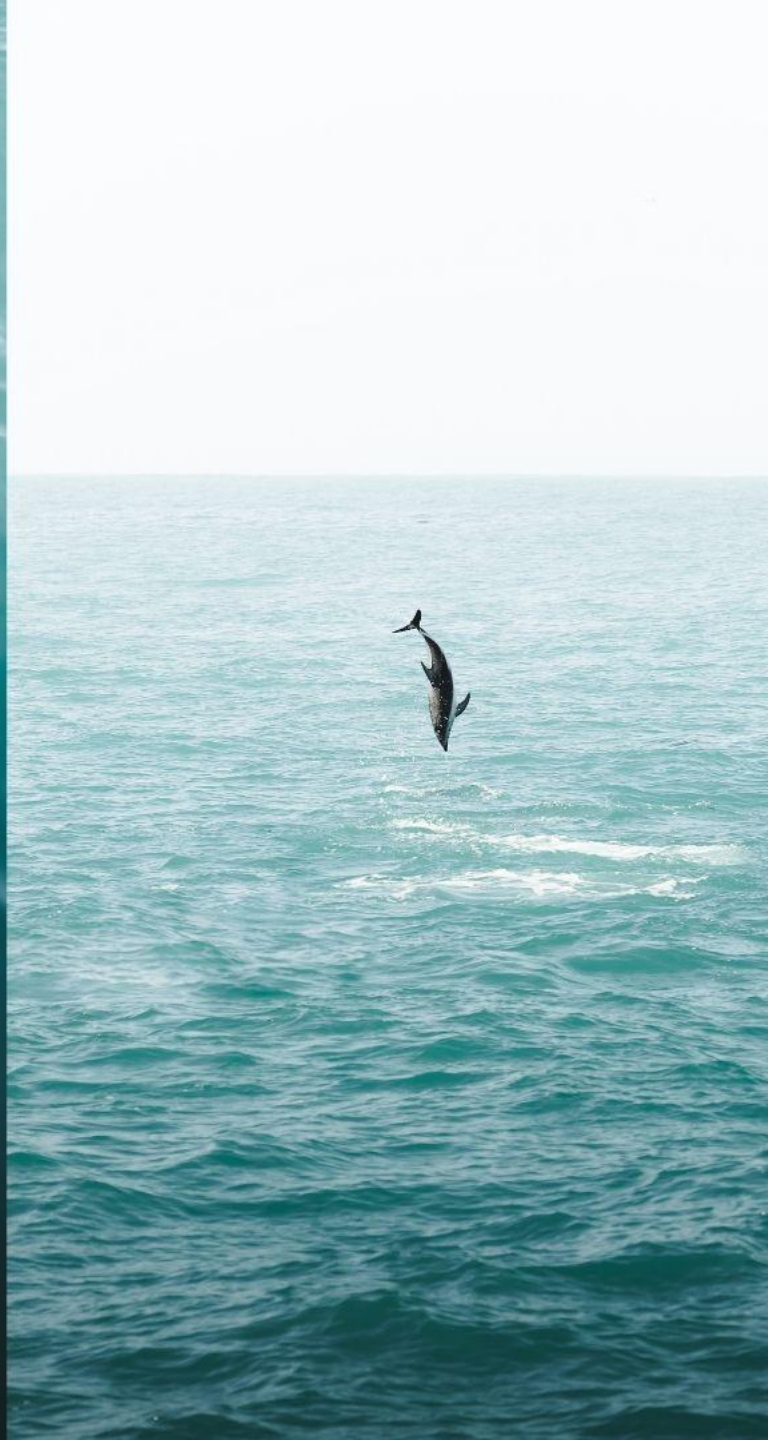
ORCA (KILLER WHALES)

VISITORS TO KAIKOURA BETWEEN
NOVEMBER- MARCH



DUSKY DOLPHINS

KNOWN FOR THEIR LEAPS, JUMPS AND FLIPS. PODS OF BETWEEN 100-1000



HECTOR'S DOLPHINS

ONLY FOUND IN NEW ZEALAND WATERS. ENDANGERED SPECIES, ONE OF THE WORLDS SMALLEST MARINE DOLPHIN



NZ FUR SEALS

ONCE HUNTED TO NEAR EXTINCTION NOW
NUMBER IN THEIR 1000'S ALONG THE KAIKOURA
COASTLINE.



The image shows three albatrosses swimming in the ocean. The water is a deep blue, and the sun is shining brightly, creating a shimmering path of light across the surface. One albatross is in the upper center, another is in the lower left, and a third is in the lower right. They all have white heads and necks with dark brown wings and backs. The text is overlaid on the left side of the image.

MARINE BIRDS

IN KAIKOURA WE CAN SEE UP TO 75% OF
THE WORLDS MARINE BIRD SPECIES

AM I GUARANTEED TO SEE A WHALE ?

NO-BUT THE CHANCES ARE VERY HIGH, WE HAVE A 95% SUCESS RATE WITH SIGHTING WHALES. IN THE EVENT THAT OUR TOUR DOESN'T SEE A WHALE WE GUARANTEE AN 80% REFUND OF THE CUSTOMERS FARE.



PURPOSELY DESIGNED & BUILT FOR WHALE WATCHING

TWO NEW VESSELS HAVE JOINED THE FLEET



NEW FLEET OVERVIEW

TOTAL PASSENGER CAPACITY: 116 PAX

CAPTAINS CABIN (UPSTAIRS): 12 SEATS

OCEANS CABIN (DOWNSTAIRS): 104 SEATS

24M VESSELS, 4X SCANIA MARINE DIESEL
ENGINES, 4X HAMILTON JETS







OCEAN'S CABIN EXPERIENCE

- CAPACITY LIMIT OF 104
- AWARD- WINNING MARINE ANIMATIONS
- THREE LARGE SCREEN DISPLAYS
- A FULL TOUR NARRATION
- WATER FOUNTAIN
- AIR CONDITIONED CABIN
- OUTDOOR SEATING
- VIEWING OF ENTIRE LOWER DECK, GRAND STAND STYLE FRONT DECK & REAR TOP DECK





VIP CAPTAINS CABIN EXPERIENCE

- CAPACITY LIMIT OF 12 PASSENGERS
- BUSINESS CLASS SEATING - ANGLED SEATING
- AIR CONDITIONED CABIN - WATER FOUNTAIN
- A FULL TOUR NARRATION - ACCESS TO ENTIRE BOAT
- LARGE SCREEN DISPLAYS FOR OUR AWARD-WINNING MARINE ANIMATIONS
- OUTDOOR SEATING AND 180 DEGREE VIEWING OF TOP DECK
- EXCLUSIVE VIEWING DECK ON THE TOP DECK (NEW VIEWING SPACE)
- INDIVIDUAL FOOD BOX AND COLD DRINK (DAILY FRESH MADE FOOD BOXES)



TOUR TIMES AVAILABLE

- 7:45AM DEPARTURE
- 8:30AM DEPARTURE
- 10:30AM DEPARTURE
- 11:15AM DEPARTURE
- 1:15PM DEPARTURE
- 2:00PM DEPARTURE
- 4:00PM DEPARTURE
- 4:45PM DEPARTURE



A group of people, including children, are on a boat looking out at the ocean during sunset. The sun is low on the horizon, creating a warm, golden glow over the water. The sky is filled with soft, white clouds. The people are leaning on the boat's railing, looking towards the sea. The overall atmosphere is peaceful and scenic.

HOW LONG IS THE TOUR?

ALLOW 3.5 HOURS FOR CHECK-IN, SAFETY BRIEFING, BUS TRANSFER AND TIME ON THE WATER.

JUST UNDER 2.5 HOURS IS SPENT ON THE WATER

TICKETING



OPERATIONAL UPDATE

- WINTER HOURS - 8:30AM - 5:00PM
- SUMMER HOURS - 7:00AM - 7:00PM
- CLOSED **4TH & 5TH SEPTEMBER**
- CHANGE FROM CHECK-IN TIME TO DEPARTURE TIME
- NEW COFFEE CART AND FOOD OPTION

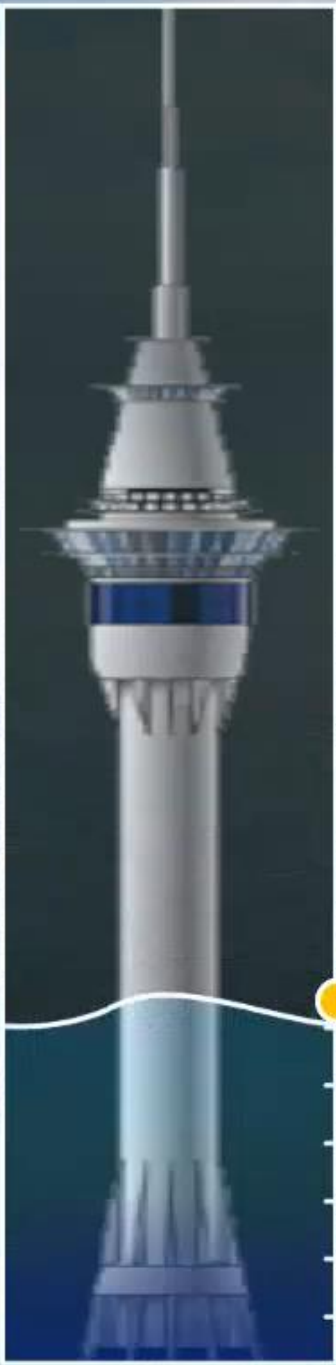


SEE-LEVEL SOLUTION



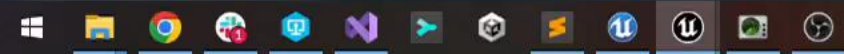
- DRUG FREE
- IMMEDIATE RELIEF
- REDUCES NAUSEA FAST
- NO EXTRA COST
- AVAILABLE ON ALL TOURS
- STAFF ASSISTANCE WITH USE





82 m
269 ft





SEA TEMP
9.3°C | 48.7°F

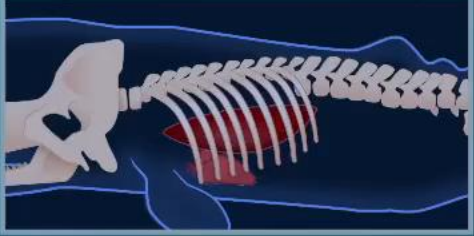
SEA SALINITY
35.0 PPT

DIVE TIME
0:21
MODE
NORMAL



OXYGEN 99%

WATER PRESSURE 3.2 ATM



WATER SPEED: 14.9kn | 27.6km/h | 12MPH

Ceeb
Parãoa | Sperm Whale

Light Irradiance: 26,847.7 LUX

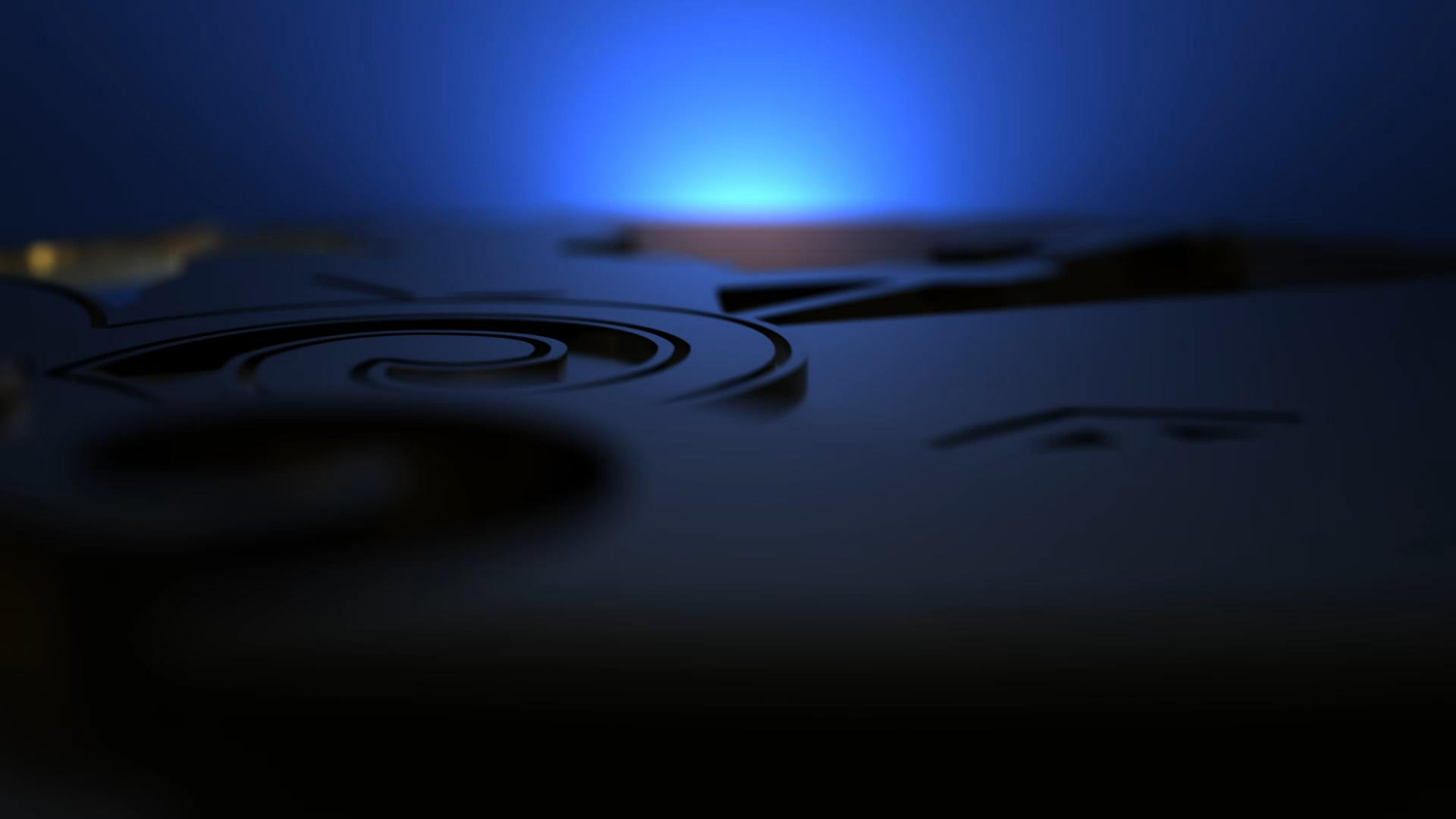


TE AO MARAMA

WHALE WATCH KAIKŌURA

MNZ 142273

-1.2
-1.0
-0.8



A group of people, including children, are looking out at the ocean from a boat deck during sunset. The scene is filled with warm, golden light from the setting sun, creating a serene and scenic atmosphere. The water is a deep blue, and the sky is a mix of soft pinks, oranges, and blues. The people are dressed in casual outdoor attire, and their attention is focused on the horizon.

NEED NEW CONTENT?!

- NEW KEY CONTACT!!
- NEW PROMO VIDEOS
- HERO SHOTS
- ADVERTISING MATERIAL
- QR BROCHURES